

# GILDAN®



## 85800L

**GILDAN®**  
PREMIUM  
*Colton®*

XL | EG | TG  
LADIES | DAMES | DAMES

100% COTTON / COTON / ALGODÓN

MADE IN / FABRIQUE AU / HECHO EN HONDURAS



### Premium Cotton Ladies' Double Pique Polo

#### DETAILS

##### Weight

223.0 G/SqM (White 214.0 G/SqM)

##### Content

100% Combed Ring Spun Cotton

##### Features

Contoured welt collar and cuffs  
Pad printed neck label and double-satin shoulder label  
Rolled forward topstitched shoulder  
Clean finished reversed placket with reinforced bottom box  
3 colour-matched buttons  
Twin needle bottom hem

##### Sizes

S-2XL

##### Case Packs

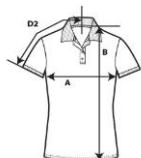
S - 2XL 36 PIECES

##### Colours

20

##### SKU's

100



#### SPECIFICATIONS

Centimeters	Tol-	Tol+	S	M	L	XL	2XL
Chest (A)	2.540	2.540	43.000	46.000	50.000	54.000	58.000
Length from HPS (B)	2.540	2.540	63.000	66.000	69.000	72.000	76.000
Sleeve length (centre back) (D2)	2.540	2.540	36.000	38.000	41.000	43.000	46.000

Inches	Tol-	Tol+	S	M	L	XL	2XL
Chest (A)	1.000	1.000	17.000	18.000	19.750	21.250	23.000
Length from HPS (B)	1.000	1.000	24.750	26.000	27.250	28.500	29.750
Sleeve length (centre back) (D2)	1.000	1.000	14.000	15.000	16.000	17.000	18.000

#### S-2XL

COLOURS	Code	Comments
Black	036	
Chalky Mint	26G	
Daisy	098	
Dark Heather	108	50% Cotton, 50% Polyester
Flo Blue	23G	
Graphite Heather	516	50% Cotton, 50% Polyester
Heliconia	010	
Irish Green	167	
Kiwi	186	
Light Blue	069	
Light Pink	020	
Maroon	083	
Military Green	106	
Navy	032	
Purple	081	
Red	040	
Ring Spun Sport Grey	295	90% Cotton, 10% Polyester
Royal	051	
Sapphire	026	
White	030	

#### CHANGES

##### Additions

S, M, L, XL, 2XL

Chalky Mint, Flo Blue, Graphite Heather, Military Green

Total Net Change 20 SKU's