

KARIBAN

REFERENCE : K213

SIZES : XS_S_M_L_XL_XXL_3XL_4XL_5XL

COMPOSITION :

Main fabric : Combed cotton heavy single jersey ring spun pre shrunk - 280 For body, sleeves and tape shoulder seam 100% cotton

Fabric 2 : Cotton twill - 200 For collar and tabs 100%cotton

WEIGHT :

Main fabric : 280 gsm

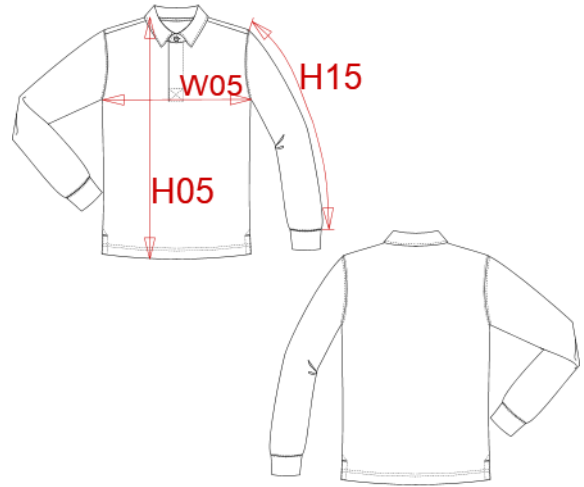
Fabric 2 : 200 gsm

TECHNICAL DETAIL :

Preshrunk

ARTICLE WEIGHT :

406 gr/pc



DESCRIPTION	
Français :	Polo rugby
English :	Rugby polo shirt
Nederlands :	Rugbypolo
Deutsch :	Rugby-Polohemd
Español :	Polo de rugby
Italiano :	Polo rugby
Português :	Polo rugby

COLORS	PANTONE SERIGRAPHIE
Navy / White	433C / White
Black / White	Black / White
Light grey / White	416C / White
Light royal blue / White	653C / White
Orange / White	1585C / White
Sky blue / White	278C / White
Wine / White	504C / White
Red / Black	200C / Black
Dark grey / Black	447C / Black

MEASUREMENT										
Description	XS	S	M	L	XL	XXL	3XL	4XL	5XL	
H05 (M) Hauteur totale / Total height	68	70	72	74	76	78	80	82	84	
H15B (M) Longueur manche avec poignet / Sleeve length with cuff	66,25	67	67,75	68,50	69,25	70	70,75	71,50	72,25	

CARE LABEL				

PACKING	
Box	25 pcs / box XS => L:58cm W:36cm H:29cm GW:11.90kg NW:10.50kg S => L:58cm W:36cm H:29cm GW:12.50kg NW:10.80kg M => L:58cm W:36cm H:30cm GW:13.00kg NW:11.00kg L => L:58cm W:36cm H:30cm GW:13.10kg NW:11.70kg XL => L:58cm W:36cm H:31cm GW:13.30kg NW:11.90kg XXL => L:58cm W:36cm H:31cm GW:13.70kg NW:12.30kg 3XL => L:58cm W:36cm H:32cm GW:13.90kg NW:12.50kg 4XL => L:58cm W:36cm H:32cm GW:14.60kg NW:13.20kg 5XL => L:58cm W:36cm H:33cm GW:15.10kg NW:13.50kg