

PROACT.®

REFERENCE : PA481

SIZES : XS_S_M_L_XL_XXL

COMPOSITION :

Main fabric : Polyester interlock - 155 100%polyester
 Main fabric : Polyester interlock - 155 For contrasted shoulder seam piping, inner side slit and necktape. 100%polyester

WEIGHT :

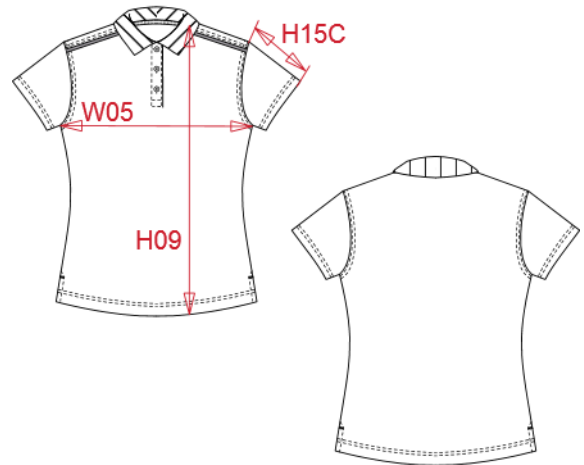
Main fabric : 155 gsm
 Main fabric : 155 gsm

TECHNICAL DETAIL :

Quick dry fabric

ARTICLE WEIGHT :

114 gr/pc



DESCRIPTION
Français : Polo manches courtes femme
English : Ladies' short sleeve polo shirt
Nederlands : Dames sportpolo korte mouwen
Deutsch : KURZARM DAMEN POLO QUICK DRY
Español : Polo de manga corta para mujer
Italiano : POLO DONNA MANICHE CORTE
Português : Polo de senhora de manga curta

COLORS	PANTONE SERIGRAPHIE
Black	Black
White	White
Sporty navy	7546C
Sporty red	1805C
Sporty royal blue	647C
Sporty grey	425C
Lime	367C
Fuchsia	7425C

MEASUREMENT							
Description	XS	S	M	L	XL	XXL	
H09 (L) Hauteur totale devant / Front total height	61	63	65	67	69	71	
W05 (L) 1/2 largeur poitrine à 1.5cm de l'emmanchure / 1/2 chest width at 1.5cm below armhole	42	45	48	51	54	57	
H15C (L) Longueur manche courte / Short sleeve length	10,50	11,50	12,50	13,50	14,50	15,50	

CARE LABEL

PACKING	
Box	25 pcs / box XS-S => L:43cm W:32cm H:16cm GW:3.60kg NW:3.10kg M-XL => L:48cm W:34cm H:16cm GW:4.10kg NW:3.60kg XXL => L:52cm W:36cm H:16cm GW:5.10kg NW:4.50kg