

CARTON	PACK	NO. SKU'S
12	3	30

**Fabric**

100% Polyester plain weave. 185gsm

Colours

Black, Black/Hot Pink, Black/Turquoise

Sizes

6, 8, 10, 12, 14,16, 18, 20, 22, 24

Features

- Cross over neckline and asymmetric zip front
- Contrast coloured zip
- Short sleeve with vented cuff
- Side vents
- Princess seams with top stitch detail for flattering fit
- Easycare

Country of Origin

China

Carton Dimensions

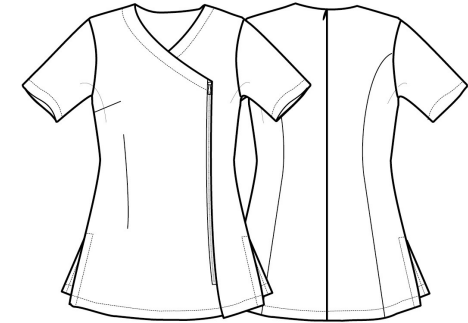
60cm x 44cm x 17cm

Carton Weight

6.20 kg approx.

VAT Code

6211 43 1000

PR686**'CAMELLIA' BEAUTY AND SPA TUNIC**

Colour	Pantone	C	M	Y	K
Black	Black	0	0	0	100
Hot Pink	214c	0	100	24	4
Turquoise	312	89	0	11	0

Size	6	8	10	12	14	16	18	20	22	24
Bust to fit "	31	33	35	37	39	41	43	45	47	49
Bust to fit cm	79	84	89	94	99	104	109	114	119	124
Call size	2XS	XS	S	M	L	XL	2XL	3XL	4XL	5XL
Bust actual cm	89	94	99	104	109	114	120	126	132	138
DE,NL	34	36	38	40	42	44	46	48	50	52
FR,ES,PT	34	36	38	40	42	44	46	48	50	52
IT	38	40	42	44	46	48	50	52	54	56
Back length cm	70	71	72	72	73	74	75	76	77	78

Marketing Description

The 'Camellia' beauty and spa tunic has an understated elegance with a cross over contrast neckline and asymmetric zip front. The vented cuff on the short sleeves and the side vents ensure ease of movement whilst the princess seams with added topstitch detail create a very flattering fit.

